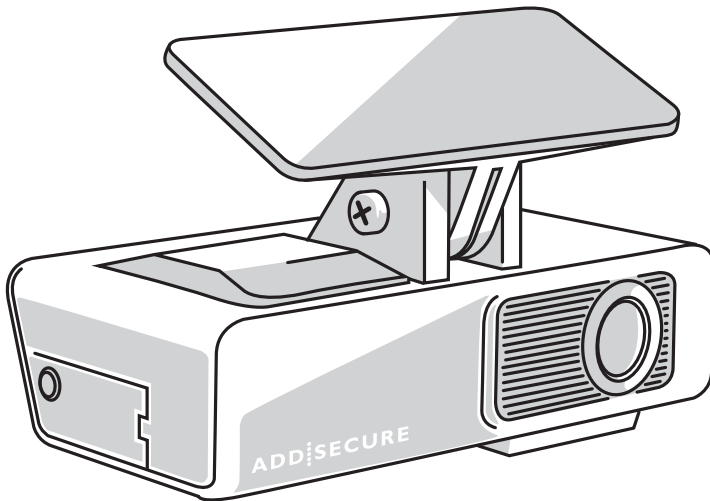
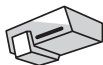


RoadView Flex Dashcam

Installation guide



Your RoadView Flex box includes:



A Dashcam × 1



B Installation bracket × 1



C Bracket bolt × 1



D FMS harness × 1



E Pry bar × 1

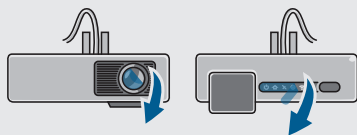


F Alcohol wipe × 1

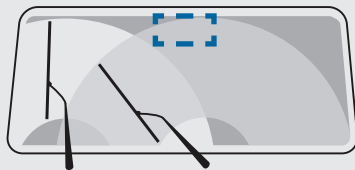


G Hex screwdriver × 1

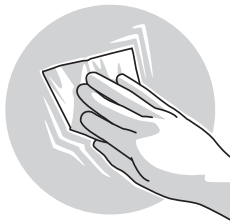
Not included:
PH2 Phillips
screwdriver



Step 1. Remove the protection stickers from lenses and LED display of the dashcam (A).



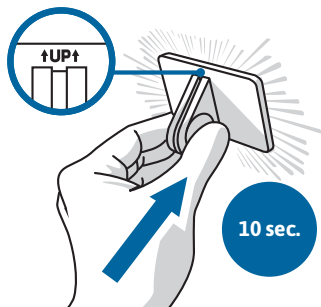
Step 2. Select the dashcam position. The dashcam must be installed in the center of the front windshield. Recommended position is above the rearview mirror and within the range of windshield wipers.



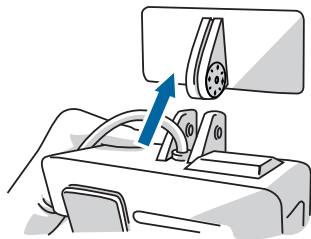
Step 3. Clean the selected area. Use the alcohol wipe (F) to clean the glass in the installation area. Ensure that the area is free of dirt and is dry.



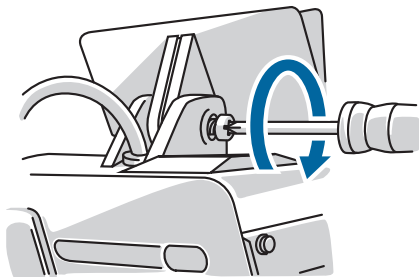
■ **Step 4.** Peel off the 3M adhesive film from the installation bracket (B).



■ **Step 5.** Attach the bracket horizontally to the clean area. Ensure that the toothed side is facing right. Press the bracket for 10 seconds to ensure that there are no air bubbles between the bracket and the glass.

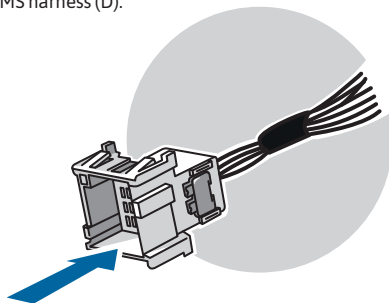


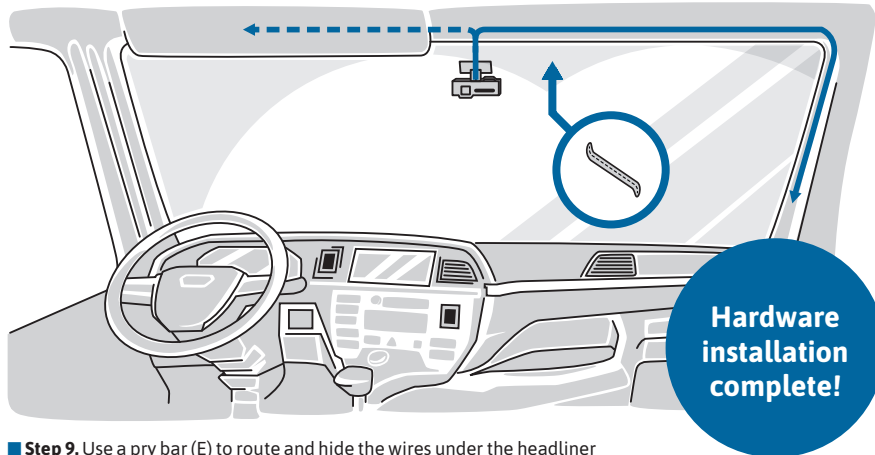
■ **Step 6.** Place the dashcam onto the installation bracket (mesh the teeth on the right side of the bracket with the teeth on the right inside of the dashcam).



■ **Step 7.** Use a PH2 Phillips screwdriver to screw the bracket bolt (C) in a clockwise direction. Tighten it after adjusting the dashcam back and forth to ensure that it is in a horizontal position. Ensure that the main unit is firmly secured and does not wobble.

■ **Step 8.** Locate the truck's FMS port and connect it to the the 12-pin connector on the FMS harness (D).





■ **Step 9.** Use a pry bar (E) to route and hide the wires under the headliner and A-pillar. Select the path that is most suitable depending on the FMS-port location. Plug in both ends of the harnesses (cylindrical connector) from the camera and the FMS harness.

The hex screwdriver (G) is used to open the compartment containing the pre-installed SD and SIM cards. It is not required for installation – only to be used in specific cases, upon contact with Client Support.



How to proceed



- Please note that once the device is installed, it needs to be commissioned in the **RoadView Platform**.
- Please speak to your **AddSecure regional office**, or project manager for commissioning tool instructions. They will provide you with the access rights and training for the commissioning.
- Depending on the device, commissioning takes from 5–10 minutes. As part of the process, the camera is assigned to the correct account, and background checks are performed to ensure the camera is active, connected and correctly calibrated.