

## 10 Do I have to fill out a report about an accident even if my truck is equipped with RF?

**Yes.**

The video footage is not enough to report the incident for insurance. It supports the elements of observation and is useful for the police.



## 11 Does RL respect my privacy?

**Yes.**

Recordings are only used in case of incidents or accidents. They are not consulted without legitimate reason, thus respecting your privacy and the regulations in force. As part of the eco-driving training, the coach can also use the videos for pedagogical reasons. The company has a responsibility to inform all employees about a project to equip its fleet with video cameras.

## 12 What happens if the camera stops functioning?

**If there is a malfunction, you should report the issue to your manager.** The camera is an essential tool for your safety and the safety of other road users.



Green light:  
Everything is  
working.



Red light:  
The camera is  
malfunctioning.



Blue light:  
The camera is  
recording an event.

## Final advice...



In the event of an incident or an accident, **keep the ignition on of your vehicle!**

This allows RL to track the aftermath of the accident (hit-and-run, bad behavior of another driver, etc.) for 15 seconds.

Remotely, it will then be possible to recover these video sequences to understand what really happened and manage the accident afterwards.

Check that your RL is working properly before you hit the road.



Romain, 28 years old,  
Driver  
Heavy Goods Vehicle

***In the  
lead of our  
safety***

## **Driver Q&A about: RoadView Flex dashcam system**

In this folder we answer the most common questions about our AI-powered dashcams that equipped with collision and distance too close warnings (ADAS).



## 1 What is RoadView Flex (RF) used for?

**RF records video footage to provide evidence that can be used to prove your innocence in case of an accident or incident.** The system can also be used to warn of a potential accident before it happens.

## 2 Does it mean that RF sends alerts in the cabin?

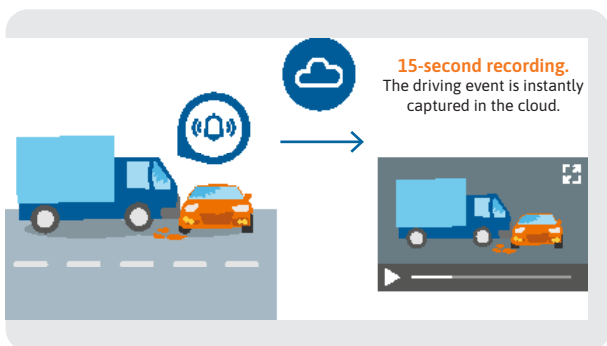
**By default, RF does not alert the driver.**

However, alerts can easily be activated in the cabin for your safety. Audible alerts can be triggered when there is a risk of collision, when you get too close to the vehicle in front of you (Headway monitoring) or when there is a risk of collision with a pedestrian.

## 3 When should I record footage manually?

**Anytime you deem useful (the ignition on).**

The camera automatically records events, but you can record a specific situation, like a slippery road, a dangerous situation, or an accident in front of you. The footage will be available on the web portal used by your fleet operator.



#### 4 Does RF film continuously?

**Yes.**

As soon as the ignition is switched on, RF records what happens in front of the vehicle. It saves the video stream in the camera. The oldest recorded video material is constantly replaced with the latest recording.

#### 5 Is RF connected to a web portal?

**Yes.**

#### 6 Is RF sending footage to the web portal?

**Yes or No.**

By default, RF sends some data, like positions, to a web portal. When there are incidents, shock events (like harsh turns or braking) or the driver presses the “manual recording button”, RF can be configured to upload the video footage to a web portal based on your privacy policies.

### Key features of the RoadView Flex

154°



Angle of view (154 °)



Automatic checks  
of the system status

HD

High Resolution  
Definition (HD) 1080p



Incident storage up to 31  
days in the camera and 12  
months in the user portal



Track and GPS trace  
Identity blurring



Built-in accelerometer



HD Night Vision



Easy to install (15 min)



Collision warning  
with audible alerts  
(configurable)



No recording in the cabin  
(no image or sound)

## 7 In addition to the images, Does RF record sound?

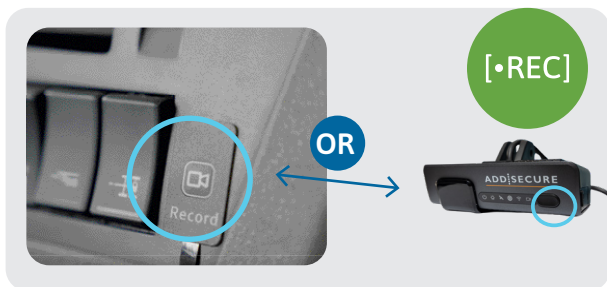
**No. No sound is recorded.**

The video images are enough to exonerate you from an event when you are not at fault.

## 8 Can I start a manual recording with RF?

**Yes.**

All you must do is to press the “Record” button located on the vehicle console (“alarm button”) or directly on the front of the camera.



## 9 In the event of an accident, what should I do with RF?

**You don't have to do anything, except keep the ignition on.**

When an accident occurs, RF captures automatically 15 seconds of recording (configurable) and sends the video recording to the web portal to the authorized person of the company.

