



AddSecure Sense

Observe cargo, containers or tools with no GSM, GPS or cable-connected hardware required.

Track what has not been tracked before!

With AddSecure Sense you can easily integrate containers, tools, equipment or other assets into the Internet of Things (IoT). You simply connect assets by attaching a small wireless SenseTag which broadcasts a unique identification. Once that is done, you can monitor and organize your assets in an optimal way. No GPS hardware or GSM subscription is required. The only requirement is that the asset to be tracked is in approximately 20m range of a vehicle equipped with a compatible telematic device from AddSecure. A passive tracking system as part of your fleet can sense and observe thousands of assets in a reliable way.

What is passive tracking?

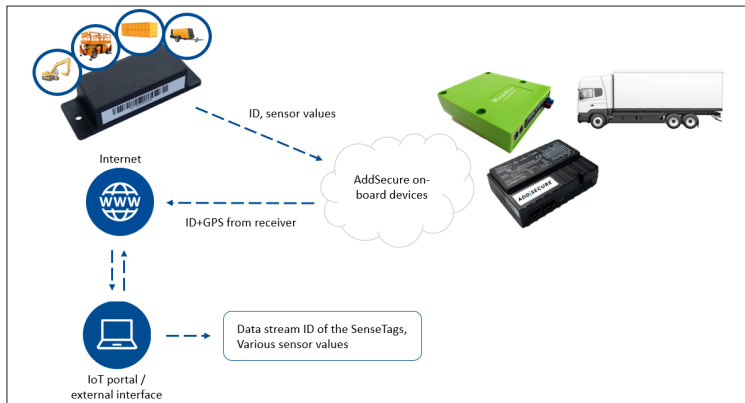
It is a smart geolocation technology based on Bluetooth Low Energy (BLE) that makes it possible to track assets with a lower

total cost of ownership. It is passive in the sense that it is dependent on other already connected devices that can pick up the ID of the Bluetooth tag ("beacon") when being nearby. It is convenient for assets without a need for real-time positioning.

The tracked assets and objects do not require a GPS or modem and the asset tags last up to 5 years with a single battery. Modern telematic units as well as smartphones or tablets can act as Bluetooth Low Energy scanners and can pick up nearby SenseTag IDs. A fleet of scanners is the foundation for a Sense Network that reliably monitors asset locations and sensor values.

Passive tracking can be used with mobile and stationary Bluetooth scanners and is compatible with other identification systems such as Barcodes or QR Codes.





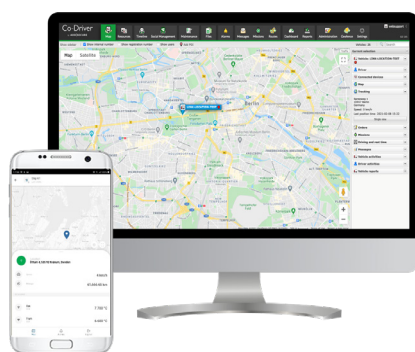
The SenseTag is easy to attach to any type of asset. It has Bluetooth 4.0+, a 5-year battery life and acts as data logger.

How does AddSecure Sense work?

AddSecure Sense consists of three parts:

- AddSecure SenseTag hardware
- AddSecure Sense Network, the telematic devices with active Bluetooth scanners
- A web portal to visualize asset locations and sensor values

The AddSecure SenseTag is a Bluetooth Low Energy (Bluetooth 4.0+) device that can be attached on any type of equipment. The transmitter has a long battery life of up to 5 years that is convenient for the tracking of non-powered assets. It emits its unique identification together with sensor values like temperature recordings. The data is picked up by a nearby telematic device, e.g. AddSecure Roadbox, which includes a Bluetooth scanner. The telematic device forwards the ID and the position of the SenseTag to the web portal in a secure way. This way the user can see the positions of the SenseTag immediately on a map interface.



The web portal offers you a view of all your assets through AddSecure Sense.

User friendly web portal for the office team

Through the map display, you get the positions of your assets in the same map as for your vehicles. In addition, you can track and trace your assets history. The user management makes it possible to create different types of users. It is easy to configure how you want to see the information through personal settings. With a high flexibility you get access to your data either from your office or using your own mobile device to access the portal at any time.

Benefits

- Robust and durable hardware design
- 5-year battery life with a single battery
- Easy to install and attach to assets (e.g. using glue)
- Automatically observe assets that could not be tracked before
- Reduce costs through increased efficiency and transparency
- Prevent theft and loss of assets
- Monitor the status and utilization of assets
- Create groups of assets and attach meta data to tags
- Create reports and data exports

Requirements

- Telematic unit with Bluetooth tracking enabled.
- SenseTag or Bluetooth Low Energy compatible tags.
- Assets must be in approx. 20m range and should not be fully covered by metal.