



Co-Driver Services

Positioning

Position your trucks in real time, track previous trips and work with geofences to better monitor and manage your transports.

Our positioning service includes three key functions:

- Positioning (real time)
- Tracking (historical routes)
- Geofencing (geographical zones)

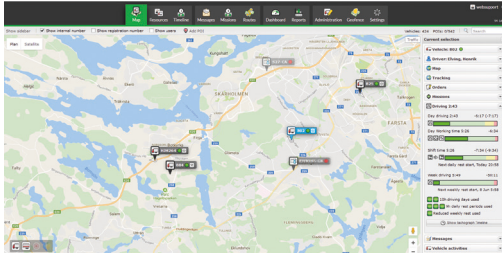
Positioning to get full control of your operations in real time

Position all your vehicles, trailers, containers and other assets on Co-Driver's dynamic map. Get essential data for real-time fleet management and analysis of your transport activities. Add the points-of-interest that are relevant for your operations. In just a few clicks, you identify the real time positions of your vehicles, drivers or equipment. Let your customers get the same view as you have though giving them access to the positioning service for the vehicles that serve them.

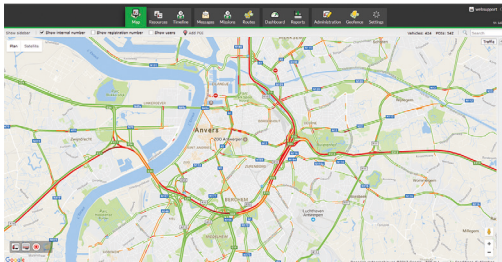
Use the filter to only see what is relevant for you; vehicles, trailers, assets, geofences or points-of-interest. Also, the status of the tachograph can be used as filter: Driving, Other work, Resting or Available (only applicable for vehicles equipped with tachographs connected to our onboard computer). In the current selection panel, you get easy access to the other services you subscribe on through just one click. Thanks to the positioning tool, you can plan your missions in an optimal way.

Select map or satellite view to get optimal overview or choose street view for detailed view of streets ("Google Pegman"). Get the latest update about the traffic density directly in the map thanks to the traffic layer.





The map offers an overview of all your vehicles and the details of their activities.



Evaluate the traffic in in real-time.

Analyse previous trips through the tracking feature

Analyse the history of trips and identify speeding violations and stops immediately. Easily track vehicles during any selected time period, from hours to months. Review the stops and their duration, the speed, the driver's activities and the waiting times directly in the map or in detailed reports (Start- and stop Reports, optional).



Analyse the history of a route with the direction, the speed and the stops.

Geofencing to see when a vehicle enters or leaves a certain area

With Geofencing, you create geographical zones that trigger alerts. You get real-time information when a vehicle leaves or

arrives in a certain geographical area. The geofence message can be sent directly to the driver with useful information about deliveries or reminders. It is possible to create reports and track vehicles after a geofence has been triggered. You can also see geofence information directly on the map. Make sure that geofence icon is highlighted!

Create a geofencing zone around your site or your customers sites. When the truck is approaching, an alert can be configured to be sent to you, your customer and the driver. Everybody can get ready more quickly. You can also control your drivers' routes with geofencing. If you want to forbid some areas, it is easy. Just select them and you can easily check if your drivers follow your instructions.

Required equipment

The necessary hardware equipment will depend on the resource needing tracking*:

- AddSecure Roadbox: for heavy commercial vehicles
- AddSecure Asset Pro/Light/Eye: for trailers or any other autonomous equipment (container, construction machine, dumpster, skids etc.)
- AddSecure Co-Driver App: in the drivers' mobile interface (BYOD)

*For more information, please refer to our product data sheets.

Benefits

- Get an overview and full control of all your resources in one map
- Optimize your transport management
- Monitor your operations on the field
- Let your customers access the positioning service for the vehicles that serve them
- Enhance the driver's navigation with personalised points of interest.
- Reduce non-authorised trips.
- Rely on accurate and precise information for litigation management.
- Communicate accurate delays to your customers.