



Co-Driver Services

# Mission management

Ensure your drivers have up-to-date info about their missions and to get complete data for smooth billing of your transports

By connecting your Transport Management System (TMS) with Missions, you will be able to display the transport tasks for your drivers directly in the vehicles. The user interface is easy to use, and the service is divided into three levels:

- Mission: A route that usually has more than 2 stops
- Stop: Loading and / or unloading
- Task: What to do at each stop (tasks to be completed, scanning, quantities to confirm etc.)

The above levels can be supplemented with: Status, Information, Questions, Position and Deviation.

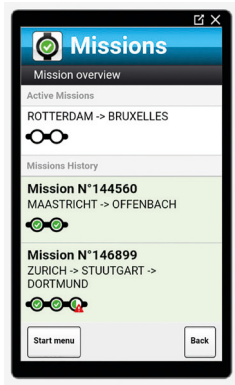
Questions can be made mandatory to ensure that the required information from the assignments is collected before a mission can be completed. This ensures that the right information is collected as a

basis for billing to optimize the invoicing process. You can schedule the assignments and then in real time follow the updates and tasks performed by the drivers such as Acceptance of the Mission, Load and Unload.

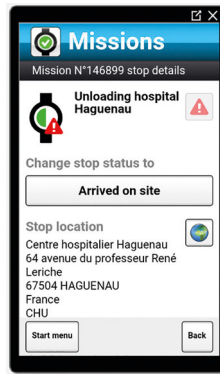
## Show transport duties directly to the vehicles

Plan and send out the transport assignments to the drivers via your transport management system (TMS). The drivers are notified on their tablet / smartphone when an assignment is assigned to them. While performing the assignment, they update the status to finally put it as finalized. The solution includes a variety of features, such as starting navigation tools directly from the mission.

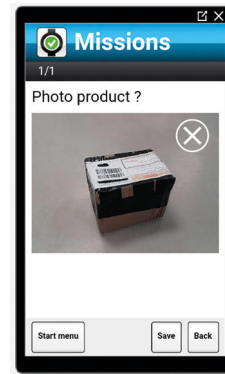




A progress line informs the driver on the status of the missions



The driver can directly launch navigation to next stop the driver can



Capture photos of damaged goods.

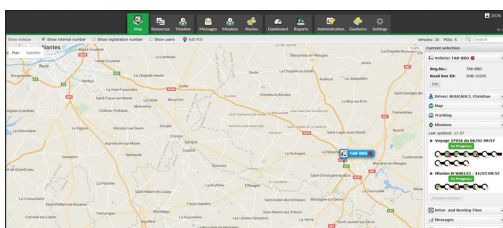
## Compare forecasts with actual outcomes in transport missions

There are powerful opportunities to compare forecasts in your TMS with actual data collected from the onboard computer. For example, you can analyze mileage on your vehicle, roads, service hours, breaks and rest times, waiting times, empty driving or consumption. You can calculate the profitability of a route or mission and use historical data to negotiate new agreements.

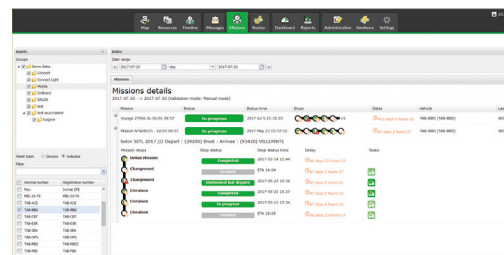
### Key features

- Connect your drivers and let them access their assignments digitally
- Get status updates and progress in real time
- Get full control of the order-to-cash process for your transports

The driver updates the status of the stops (arrived on site, at the dock, finished), associates them with pictures or signatures as proofs of delivery and scans barcodes. At the office, missions can be followed up in detail. The progress is evaluated in seconds on the map or analyzed in a report.



A selected vehicle on the map with its current missions.



The display of the progress and the tasks helps you to quickly view the details of your missions.

### Benefits

- Get full control of the order-to-cash process for your transports
- Display transport orders on the drivers' screens.
- Collect business critical information from the field (quantities, volumes, hours etc.).
- Offer proofs of delivery to your customers (signature, barcode, pictures).
- Use the history of your missions to negotiate new contracts.
- Our solution is compatible with most Transport Management Systems

### Required equipment\*

A driver interface is necessary for this service

- AddSecure Vision Fixed or Vision Mobile
- AddSecure Co-Driver App

\*For more information, please refer to our product data sheets.