



## Co-Driver Services

# Route Calculation

Optimize your fleet's missions through route calculation.

**Key features**

- Easy-to use tool to calculate routes for your transports
- Conditions, such as tolls and road limitations can be defined
- Route suggestions between destinations based on truck attributes
- Stop-based planning, with multiple routes, timing, driving instructions
- Calculates the driving time and working hours needed for a mission

**Avoid unnecessary kilometres and save fuel by choosing the best routes**

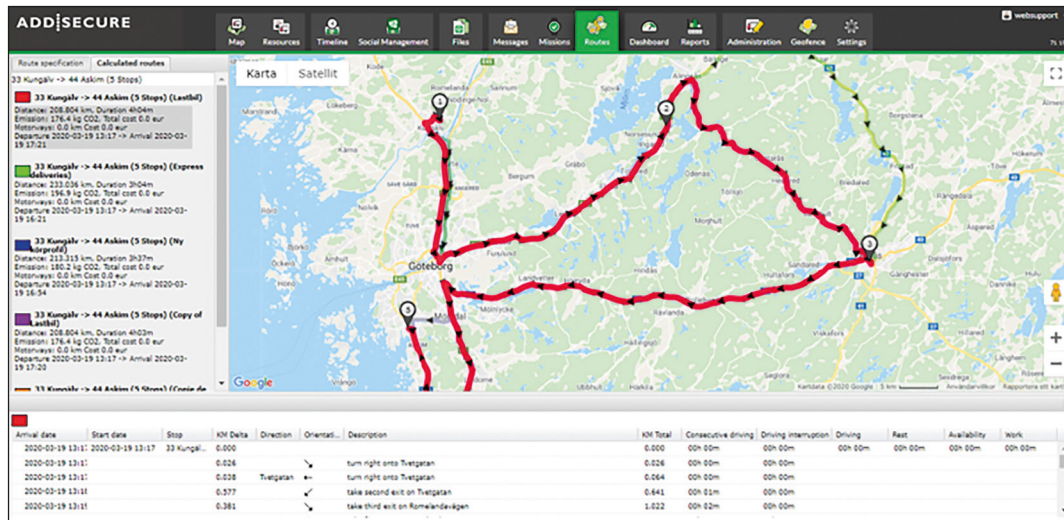
Route optimization is the process of finding the most cost-effective route for a set of stops. It is used when you want to minimize drive time for multiple stops, while also accounting for a range of complexities like

customer time windows, vehicle capacities, driver schedules, and more.

**Get a clear view how much driving time that is needed for a mission**

If your fleet is not homogeneous and your missions often are different, you would benefit from using our route calculation service. It is customizable. Define the criteria for each mission, such as, for example, the vehicle profile (truck over 7.5t, bus, truck with trailer etc.), the number of axes, the weight of the vehicle and trailer, the vehicle speed profile. You get an optimized route that give you an accurate estimation of length and duration of your deliveries.





Get route suggestions between destinations based on truck attributes and drive- and resting times.

## Key features include

- Conditions, such as tolls and road limitations can be defined
- Possible to get a suggested route between several destinations, calculated with truck attributes in mind
- The advanced user can create profiles of its own, to compare the length and speed of different routes
- Stop-based planning, with multiple routes, timing, driving instructions
- Presents how much driving time and working hours that will be needed for a mission
- Possible to add a waypoint in address search
- Extend the address search with ability to search for Points of interests (POI), vehicles and drivers

- Map centred on the calculated route

- Drag and drop to move a way point

- Icons for stops and addresses are always displayed

## Required equipment

- AddSecure Co-Driver Weboffice

## Benefits

- Cut transport costs
- Improve customer service
- Reduce planning and order lead times
- Maximise use of drivers and vehicles
- Cut carbon emissions and fuel costs
- Create multiple profiles to compare the length and speed of different routes